

RELAÇÃO DO AÇO

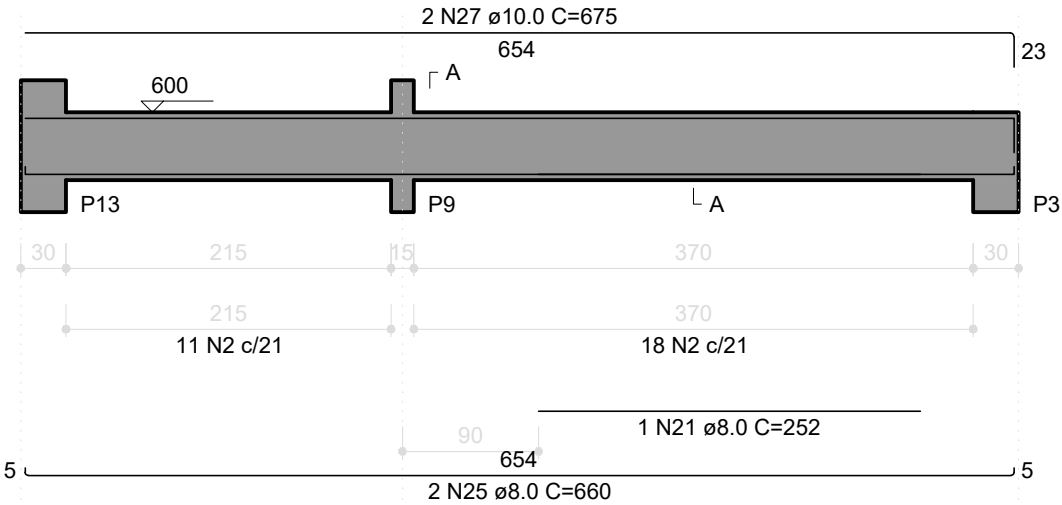
V301
V304
V307

V303
V306

AÇO	N	DIAM (mm)	QUANT	C.UNIT (cm)	C.TOTAL (cm)
CA60	1	5.0	174	97	16878
	2	5.0	87	107	9309
	3	5.0	34	87	2958
CA50	4	6.3	3	67	201
	5	8.0	6	1010	6060
	6	8.0	4	250	1000
	7	8.0	1	170	170
	8	8.0	1	628	628
	9	8.0	2	1140	2280
	10	8.0	2	189	378
	11	8.0	1	270	270
	12	8.0	1	510	510
	13	8.0	1	263	263
	14	8.0	2	230	460
	15	8.0	1	145	145
	16	8.0	2	1144	2288
	17	8.0	2	184	368
	18	8.0	4	665	2660
	19	8.0	1	140	140
	20	8.0	2	694	1388
	21	8.0	2	253	506
	22	8.0	1	185	185
	23	8.0	1	225	225
	24	8.0	2	693	1386
	25	8.0	4	660	2640
	26	8.0	2	674	1348
	27	10.0	2	675	1350
	28	12.5	1	255	255
	29	12.5	2	1137	2274
	30	12.5	2	188	376

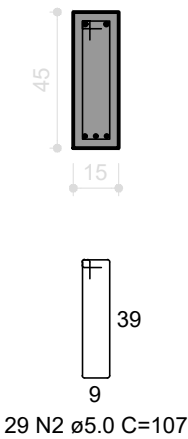
V306

ESC 1:50



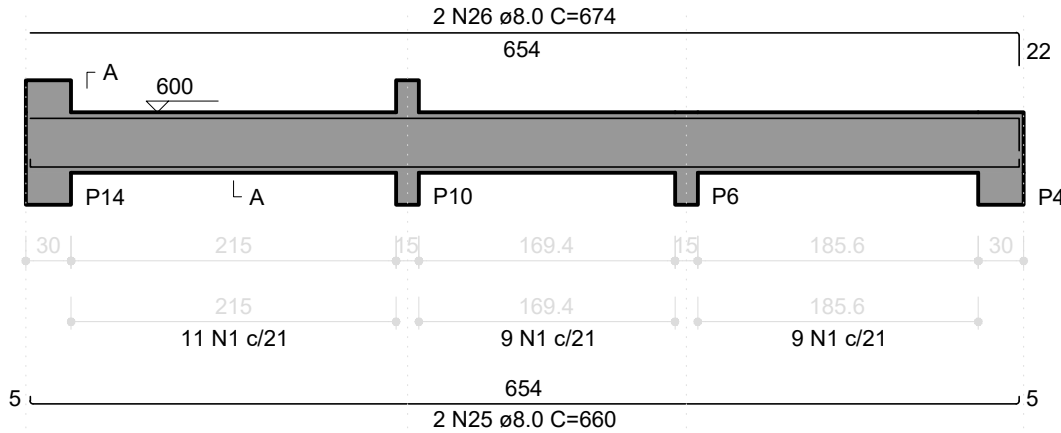
SEÇÃO A-A

ESC 1:25



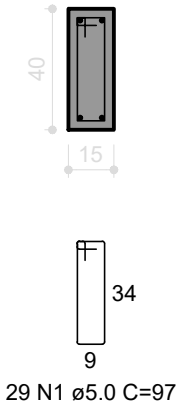
V307

ESC 1:50



SEÇÃO A-A

ESC 1:25



RESUMO DO AÇO

AÇO	DIAM (mm)	C.TOTAL (m)	PESO + 10% (kg)
CA50	6.3	2	0.5
	8.0	253	109.8
	10.0	13.5	9.2
	12.5	29.1	30.8
CA60	5.0	291.4	49.4
PESO TOTAL (kg)			
CA50	150.3		
CA60	49.4		

Volume de concreto (C-35) = 3.59 m³

Área de forma = 61.96 m²